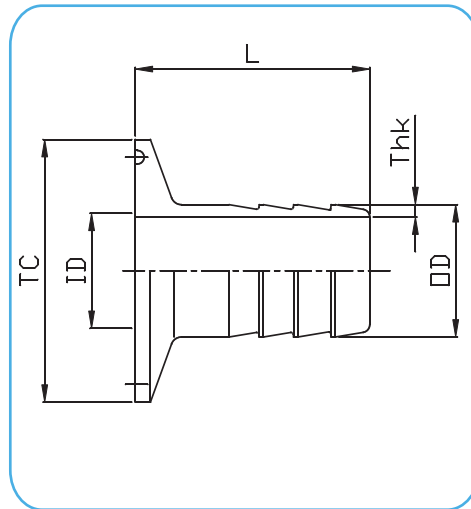


# 14MPHR Hose Barb - Tri-Clamp Fittings



## 14MPHR TC X HOSE BARB

CODE	Clamp size	ØTC (mm)	ID (mm)	OD (mm)	Thk (mm)	L (mm)
14MPHR-A050-14A-A	1/2"	25	9.4	12.7	1.65	28
14MPHR-A075-14A-A	3/4"	25	15.75	19.05	1.65	32
14MPHR-A100-14A-A	1"	50.5	22.1	25.4	1.65	45
14MPHR-A150-14A-A	1 1/2"	50.5	34.8	38.1	1.65	45
14MPHR-A200-14A-A	2"	64	47.5	50.8	1.65	60
14MPHR-A250-14A-A	2 1/2"	77,5	60.2	63.5	1.65	65
14MPHR-A300-13A-A	3"	91	72.9	76.2	1.65	80
14MPHR-A400-13A-A	4"	119	97.4	101.6	2.10	90

## Technical Information:

**Tri-Clamp Connections:** according to ASME BPE

**Material:** AISI 316L – 1.4404

**Internal Surface Finish:** Ra ≤ 0.5µm → code **14** e.g.: 14MPHR-A050-**14**A-A

**Optional:** Ra ≤ 0.5µm + Electropolish → code **54** e.g.: 14MPHR-A050-**54**A-A

**Optional:** customized Hose Barb and Tri-Clamp Connections

DATASHEETS



Last updates can be found on our website - [www.aerreinox.it](http://www.aerreinox.it)  
In the interests of development of the product, we reserve the right to change the specifications without prior notice